

## European Council

### 22 and 23 June 2017 - Brussels

### PRESS CENTRE

#### I. PRESS CENTRE

The European Council will take place in the new Europa building. The press centre remains in the adjacent Justus Lipsius building, in the usual area on levels 00, 01, 02 and 20. Media will be able to access the Europa building only to cover arrival doorsteps. Press activities on departure (including exit doorsteps) will be held in the Justus Lipsius.

The press centre will **open at 7.00 on Thursday 22 June and Friday 23 June 2017** and access is subject to possession of a valid European Council badge (6-month or event-specific badge).

- **Secured perimeter and access to the summit premises:**

- Main media access: Media may access the summit premises using the main Justus Lipsius entrance. A secondary entrance (with a smaller capacity) is also available at the corner of the Europa building. See plan 1 at the end of this note.
- The outside secured perimeter is usually activated by the Belgian police around 2 hours before the start of the meeting.
- Note that access may be disrupted or temporary blocked during arrivals of leaders. Media are advised to arrive in advance.

- **Media facilities**

About 1000 work spaces, equipped with telephone, Wi-Fi connection without password and power supply, are located as follows:

level 02:	36 work spaces
level 01:	80 work spaces
level 00:	198 work spaces
level 00 (mezzanine):	110 work spaces
level 00 (Atrium):	+/- 600 work spaces

It should be noted that **no PCs will be installed**.

Closed-circuit television carrying host broadcaster videos, images and messages will be in operation throughout the press centre.

- **Reservation of work spaces for journalists**

Media representatives may reserve work spaces using a label indicating their name and media organisation. The press office cannot reserve work spaces.

Reserved spaces not occupied at the beginning of the summit may be taken by others.

- **Internet connection**

Internet connection (Wifi and wired connections) will be available to journalists and other media operators

There will be the possibility to select the following **WiFi services** (no password is required) :

**ConsiliumSummit** (only available during summits and for devices supporting 5GHz WiFi) or

**Consilium** (always available, accessible to 2.4 and 5 GHz WiFi devices).

In order to ensure good connectivity to the Council's internet/Wifi system for all users, journalists and media operators are kindly asked to:

- use wired equipment for cameras and microphones as much as possible. If using their own router/switch, please be sure to disable WiFi feature;
- disable "personal hotspots" feature on individual smartphones or similar devices;
- not to have both wired and wireless connections to the Council network active at the same time on individual devices.

- **Press conference room/briefing rooms**

The main press conference will take place in the Justus Lipsius press room located on level 00.

The briefing rooms for use by member states are located on levels 20, 10, 01 and 02.

The exact location of briefing rooms will be displayed in the press centre.

## II. AUDIOVISUAL SERVICES

- **Facilities for TV stations**

TV editing rooms with telephones and ISDN connections, equipped for reception of the host broadcaster TV signal.

**ConferenceNetAV: this is a dedicated internet access for devices without a user interface allowing online acceptance of the "terms of use". To activate this network service, please contact the press info desk (0032 2 281 9000).**

For services provided by the Eurovision/EBU (distribution of signals, multilateral or unilateral transmission and reservation of editing rooms on a "first come, first served" basis), please see the information distributed to TV stations by the EBU.

Contact: **Dounia WOLTECHE**, Eurovision Special Events

GSM: +32 (0)474 67 39 11

e-mail: [bookings@eurovision.net](mailto:bookings@eurovision.net)

- **Satellite vehicle parking/booking of stand-up positions**

Parking places for satellite TV and radio broadcasting vehicles are located on the Place Jean Rey behind the Council building. Fibre connections with the matrix room in the Justus Lipsius building will be available.

In order to park on the place Jean Rey, you must send your request for a parking permit to: [presse.standup@consilium.europa.eu](mailto:presse.standup@consilium.europa.eu) by **17.00 on Friday 16 June at the latest** and include the following information: registration number, name of driver and telephone number. Permits for satellite vans will be issued by the security service, and any changes to the above information after the deadline could result in difficulties or delays in gaining access.

The live stand-up positions are located in the Atrium (mezzanine).  
Advance booking is essential as the number of positions available is limited.  
Deadline: **17.00 on Friday 16 June 2017**.

Contacts:

**Karolis VAITONIS**

Tel. +32 (0)2 281 41 99

Mobile: +32 (0)473 54 12 61

e-mail: [presse.standup@consilium.europa.eu](mailto:presse.standup@consilium.europa.eu)

For extra temporary ISDN connections, you have to contact the provider of your choice and inform the press centre - tel 0032 (0)2 281 9000 - [press.centre@consilium.europa.eu](mailto:press.centre@consilium.europa.eu)

- **Radio and TV studios**

The Council radio and TV studios can be booked for interviews with members of the delegations participating in the meeting. Conditions of use can be found online: <http://www.consilium.europa.eu/en/press/tv-radio-studios>.

- **TV & Photo Newsroom, live streaming**

All host broadcaster footages (arrivals, doorsteps, round table, family photo and press conferences) are available on <http://tvnewsroom.consilium.europa.eu>.

A selection of photos taken by Council photographers will be published on <http://tvnewsroom.consilium.europa.eu/photos>.

Broadcast-quality (MPEG4/H264 HD) video and high-resolution photo files can be downloaded from the above mentioned sites and used free of charge for non-commercial use (provided the copyright "European Union" is mentioned).

European Council events are also visible via the Council live streaming page: <http://video.consilium.europa.eu>.

- **Facilities for radio stations**

Each radio booth is equipped with a telephone (analogue connection), an ISDN connection and Wi-Fi internet access.

The EBU radio department will be responsible for the distribution of signals.

Additional ISDN connections must be booked directly from the EBU radio department

Contact: **Julia LONICER**, Radio News Producer  
Mobile: +41 (0)79 23 01 508  
e-mail: [Radio-Ops@ebu.ch](mailto:Radio-Ops@ebu.ch)

### III. DELIVERY AND REMOVAL OF TECHNICAL EQUIPMENT

**IMPORTANT: For delivery and removal of equipment you must request a personal daily badge (see below).**

#### ● Delivery and installation of technical equipment

Delivery and installation of technical equipment must be carried out between **08.00 and 18.00 on Wednesday 21 June** via the following entrance points:

- "Froissart", Rue Froissart 112: this greatly facilitates unloading but may be used only for vehicles up to a maximum height of 2.30 m; or
- "Etterbeek", Chaussée d'Etterbeek 70: for vehicles exceeding a height of 2.30 m.

After the equipment has been unloaded, a member of the security office will accompany you to the press centre. A few trolleys will be available.

Delivery vehicles must leave the area of the Justus Lipsius building immediately after unloading.

#### ● Removal of technical equipment

**The equipment must be removed, depending on the end of the meeting:**

- on **Friday 23 June** after the security perimeter has been lifted; or
- on **Saturday 24 June** between **08:00 and 18:00** via the **Etterbeek** entrance.

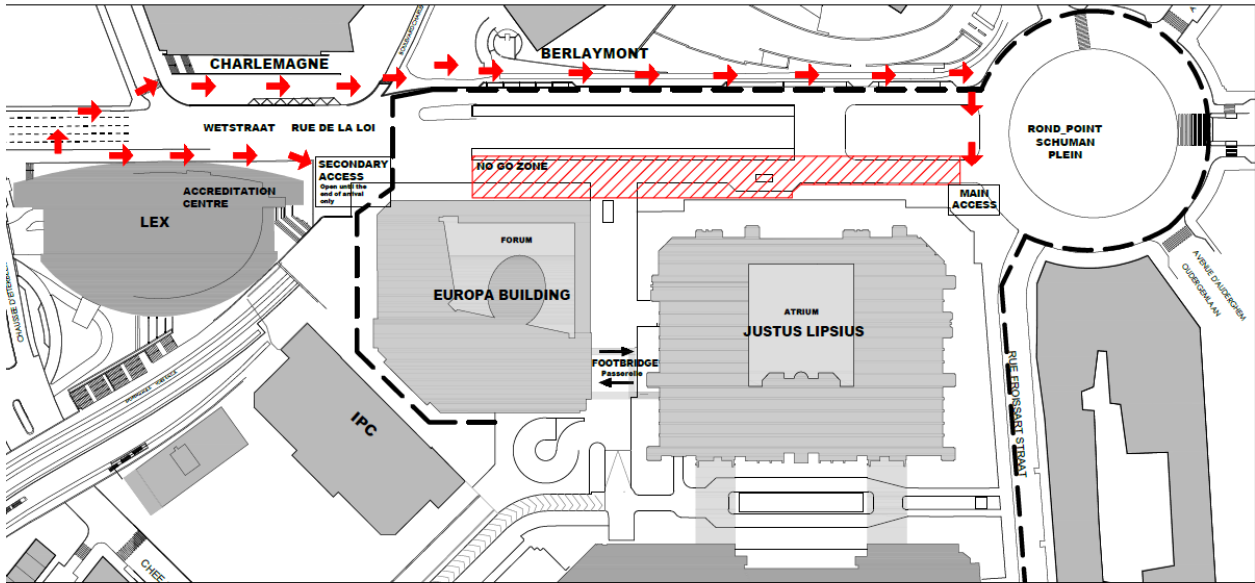
Please send your request **before 17.00 on 16 June** specifying, **for delivery on Wednesday 21 June and removal on Friday 23 or Saturday 24 June**

- 1) the name of the transporter of the equipment or the media team;
- 2) the names of team members;
- 3) the registration number of the vehicle delivering/collecting the equipment;
- 4) the expected time of arrival

Contact:  
**Stavros SPYRIDONOS & Giuseppe ANCONETANI**  
Mobile: +32 (0)473 64 05 07 / +32 (0)477 57 97 81  
[presse.dechargement@consilium.europa.eu](mailto:presse.dechargement@consilium.europa.eu)

-----

# Access to the summit

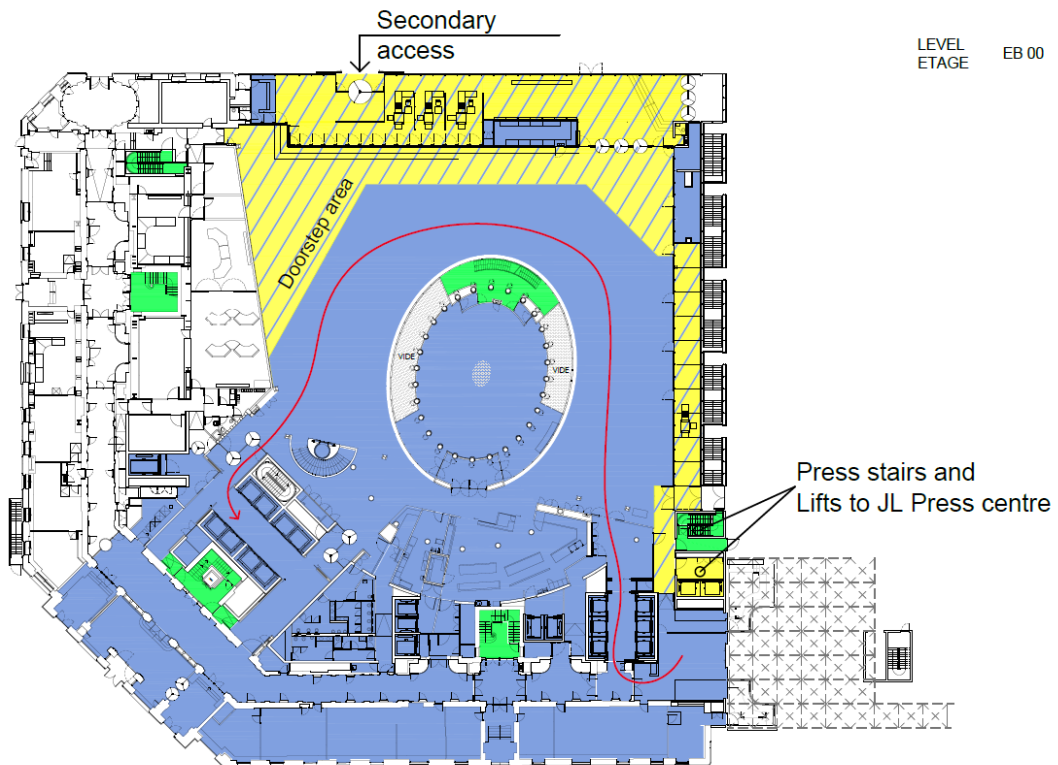


**Legend:**

--- secured perimeter (activation +/- 2 hours before the start of the meeting)

➔ press access

## Organisation of arrival doorsteps in Europa building



<p><b>YELLOW ZONE</b> ZONE JAUNE BLUE ZONE ZONE BLEUE</p>	<p>During the arrivals of Head of state Pendant les arrivées des Chefs d'Etats After the arrivals of Head of state Après les arrivées des Chefs d'Etats</p>	<p><b>BLUE ZONE</b> ZONE BLEUE</p>	<p><b>LEVEL</b> EB 00 <b>ETAGE</b> EB 00 VERSION 08/08/2017</p>	<p>European Council - Conseil européen 22 -23/06/2017</p>	
---	---	--	---	---	--